

FOR LEASE

MIXED USE MULTI PURPOSE PROJECT WITH 12,000 SQ FT OF RETAIL IN HIALEAH

Daniel Pou

PARTNER
305.934.8390
danny@fusecre.com
www.fusecre.com

Ivo Tsinev

PARTNER
305.934.8390
ivo@fusecre.com
www.fusecre.com



955 E 25th St

Hialeah, FL 33013

PROPERTY HIGHLIGHTS

- 560 residential units with 12,000 sf of retail available for lease.
- Project is anticipated to have a total of 6 phases of construction and comprise of a total of 5,000 residential units when its fully complete.
- The property offers a 2-level podium parking garage with 564 spaces. Exclusive retail parking is 48 parking spaces on the ground floor.
- The building amenities include co-working spaces, an outdoor kitchen, a pool, a gym, ground-level retail spaces, ample parking, and a Latin-inspired food marketplace.
- The Property is adjacent to the Metrorail entrance, Tri-Rail Transfer Station and Hialeah Hospital, which is one of the largest hospitals in Florida.
- This project will become one of the first highly amenitized, Class-A multifamily assets in the Hialeah market. Close to the emerging Arts District and Amelia Earhart Park.

DEMOGRAPHICS



Total Population:

1 mile

18,643

3 mile

178,581

5 mile

486,680



Households:

5,779

58,563

165,504



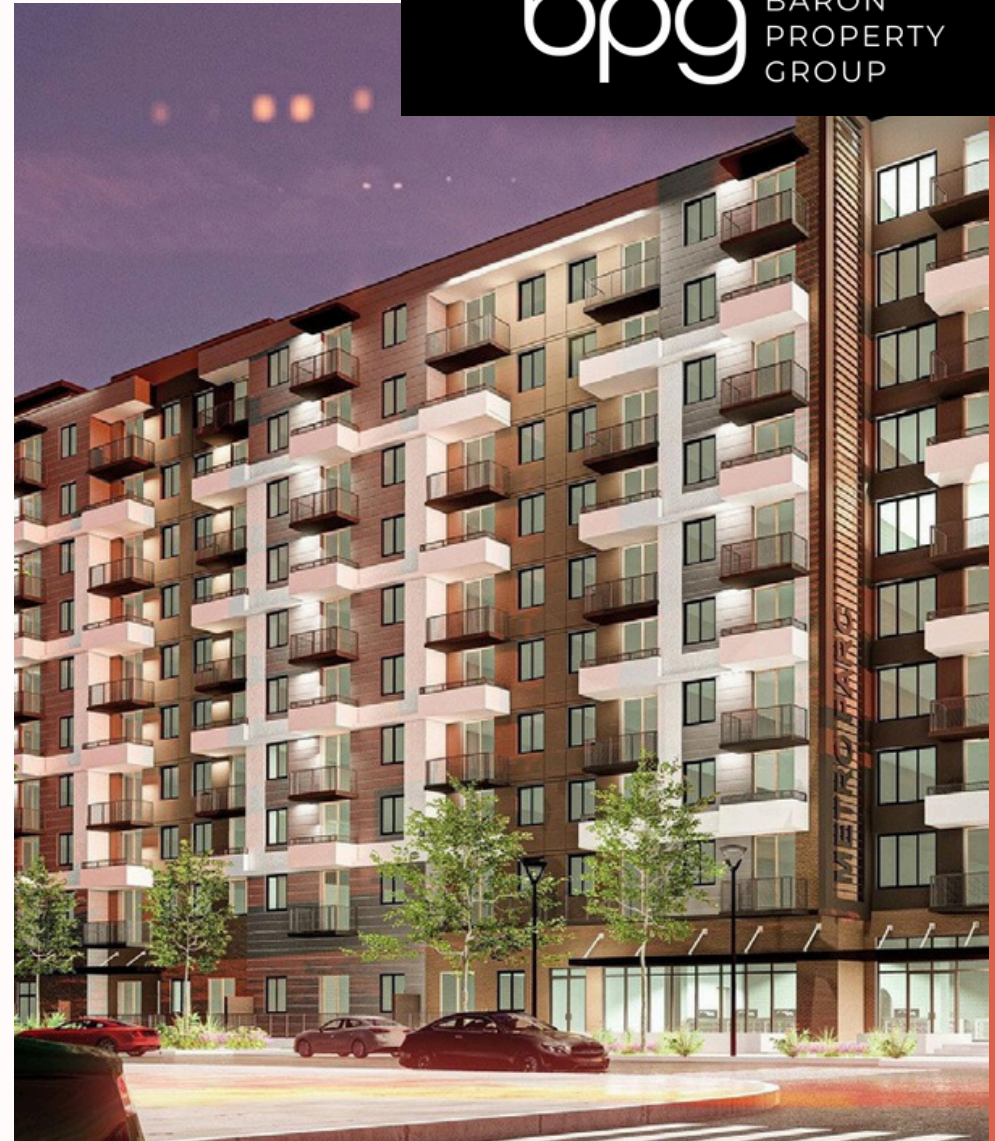
Average Income:

\$60,166

\$57,119

\$55,632

bpg BARON
PROPERTY
GROUP



955 E 25th St

Hialeah, FL 33013

bpg BARON
PROPERTY
GROUP



Contact:

Daniel Pou

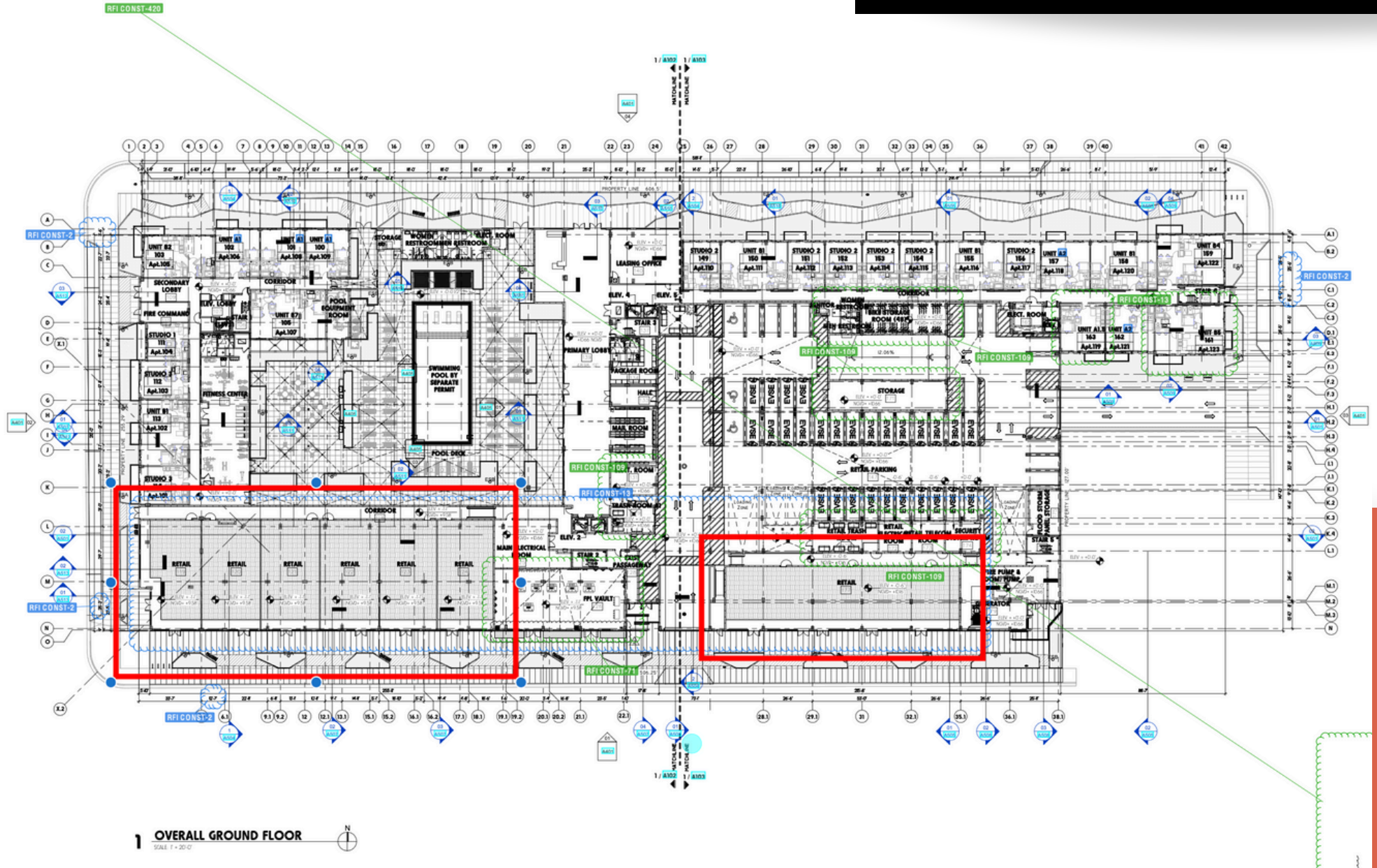
PARTNER
danny@fusecre.com
(305) 934.8390
www.fusecre.com

Ivo Tsinev

PARTNER
ivo@fusecre.com
(305) 934.8390
www.fusecre.com



Hialeah, FL 33013



Ivo Tsinev
PARTNER
ivo@fusecre.com
(305) 934.8390
www.fusecre.com



Metro Parc

955 E 25TH ST | Hialeah, FL 33013

Daniel Pou
PARTNER
305.934.8390
danny@fusecre.com

Ivo Tsinev
PARTNER
305.934.8390
ivo@fusecre.com

Fuse Commercial LLC
Real Estate Services
10200 SW 66th St, Miami FL
info@fusecre.com | www.fusecre.com

