

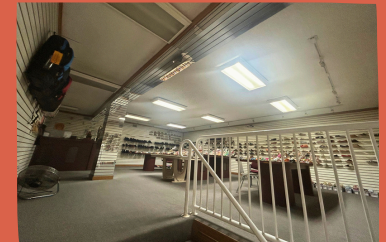
FOR SALE

RARE FIND INDUSTRIAL WAREHOUSE IN PRIME CENTRAL ALAPATTAH LOCATION

LOOKING FOR A FUNCTIONAL WAREHOUSE SPACE IN ONE OF MIAMI'S PRIME INDUSTRIAL AREAS?

Located in Alapattah this 15,241 sq ft warehouse is stands on a lot with ample parking space. This warehouse offers significant potential for businesses needing functional space in a prime industrial location. Whether for owner use or as an investment, this property is a rare find in Miami's competitive market.

1730 NW 23rd St
Miami, FL 33142



- AMPLE PARKING ON SITE
- 3 DOCK HEIGHT DOORS
- THREE PHASE POWER AVAILABLE

PROPERTY FEATURES:

- 20 FT CEILINGS
- AIR - CONDITIONED OFFICE SPACE

- CENTRALLY LOCATED WITH EASY ACCESS TO MAJOR HIGHWAYS I-95 & 836
- D1-WORKPLACE DISTRICT ZONING

CONTACT US

DANIEL POU
PARTNER
DANNY@FUSECRE.COM

IVO TSINEV
PARTNER
IVO@FUSECRE.COM

